

BEN LEE

artist + designer + creative

**PORTFOLIO SAMPLE**

ILLUSTRATION



Legion M is the first 'crowdfunded' production company in Hollywood. Their mission is to put control, to some degree, in the hands of the fans of entertainment. For this project, they wanted to create an image to be the keyart of their first "stock certificate". Their initial scope was, "Batman looking over Gotham, with the Bat Signal lit." From there, in the comprehensive, pitched a gender-neutral character, with a signal, against a city, with Easter Eggs of their entire project slate the time.



**Client:** Skydance Productions

**Project:** Call for Entries

**Responsibilities:** digital art

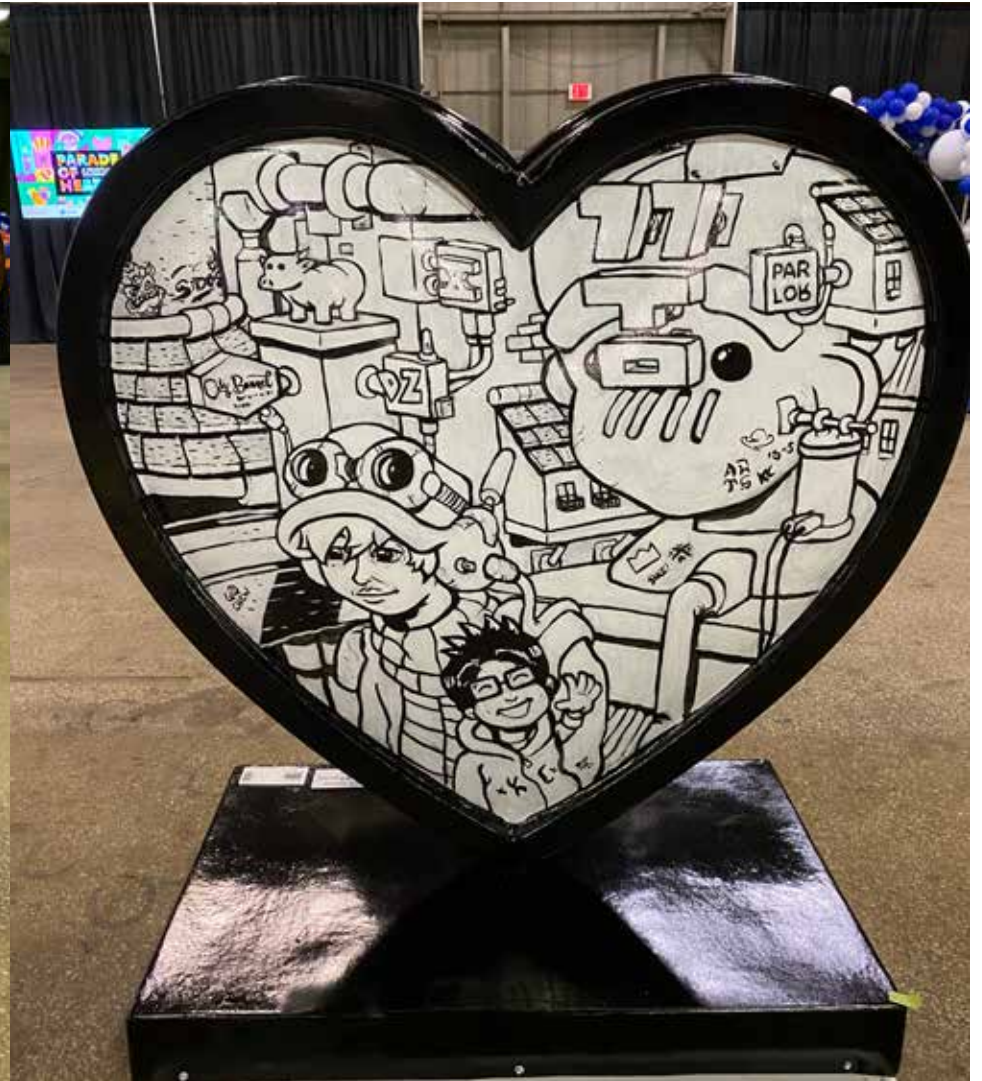
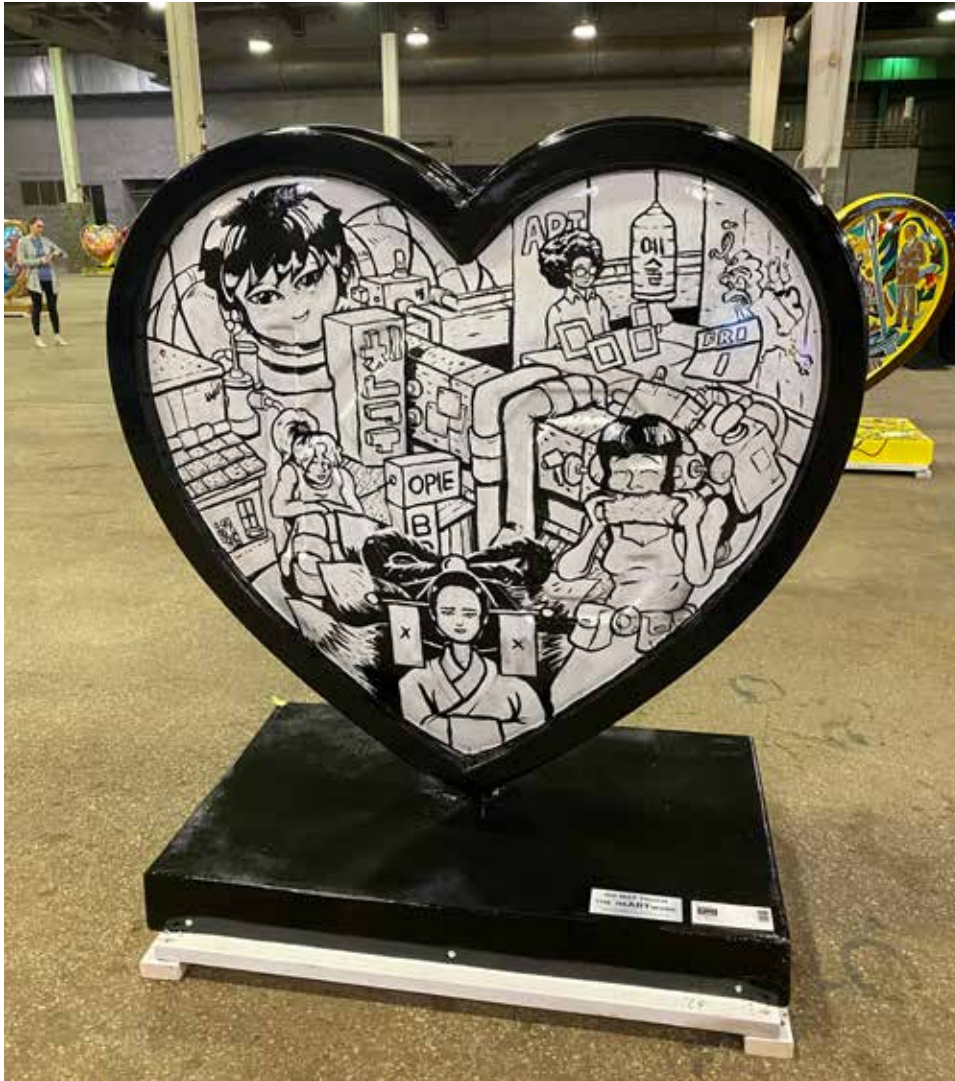
### Background:

At one point Skydance Productions had a Call for Entries for creative based around their productions. At the time, ALTERED CARBON recently premiered on Netflix, and being a fan of sci-fi, I was invested. With that, I proceeded to create a 'chibi' style illustration, which lent itself to being digital, for the submission.

ALTERED CARBON is a ™ & © Virago Productions, Mythology Entertainment, Phoenix Pictures, and Skydance Television. All rights reserved.

ARTWORK © Ben Lee, all rights reserved.





**Client:** Parade of Hearts

**Project:** 2024 Parade of Hearts

**Responsibilities:** illustration

**Background:**

Parade of Hearts is an annual event in Kansas City, MO as a region wide celebration brought to life through a public art experience featuring heart sculptures by local artists.

In 2024 I was selected among the artists. I wanted to create something in my comic book style, celebrating aspects that made me fall in love with the city.

# ASHK'LAN

CULINARY ACADEMY

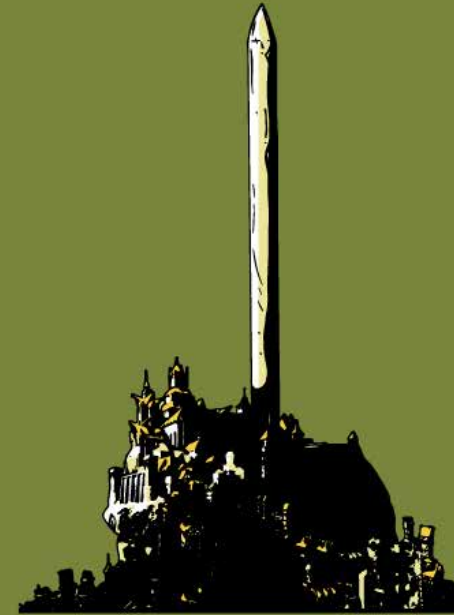


Hunger is  
FLAVOR

**Client:** Legion M Entertainment

**Project:** 'The Emperor's Blades' T-Shirt Designs

**Responsibilities:** illustration, design



# INTARRA'S SPEAR

Built by a Goddess,  
for a Goddess

**Background:**

Legion M acquired the film and TV rights for the novel series, THE EMPEROR'S BLADES, with it, Legion M wanted to create a series of t-shirts. The initial concept from the client was to take places and elements from the books and create 'travel poster' concepts for the merchandise.



**Client:** Legion M Entertainment

**Project:** 'The Emperor's Blades' T-Shirt Designs

**Responsibilities:** illustration, design

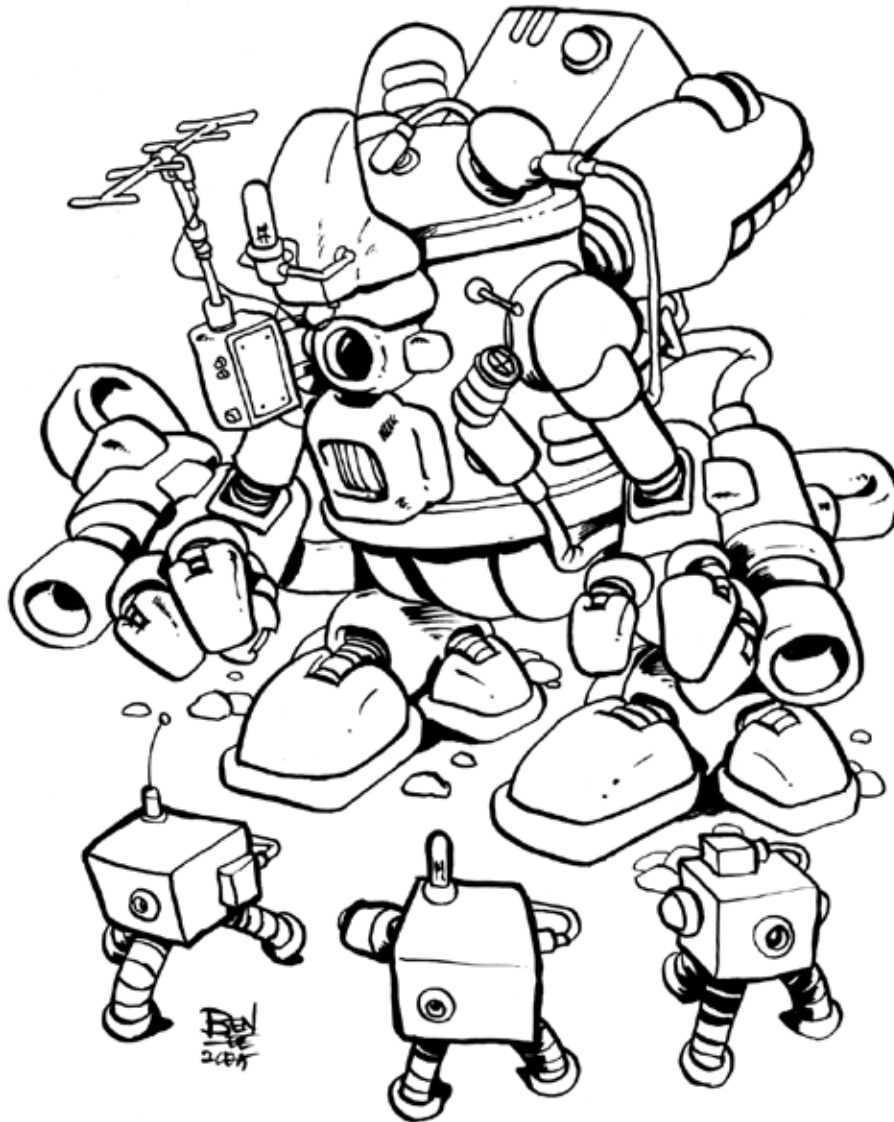


**Background:**

Legion M acquired the film and TV rights for the novel series, THE EMPEROR'S BLADES, with it, Legion M wanted to create a series of t-shirts. The initial concept from the client was to take places and elements from the books and create 'travel poster' concepts for the merchandise.



<b>Client:</b>	Ben Lee
<b>Project:</b>	SDCC Illustration
<b>Responsibilities:</b>	illustration



**Background:**

This illustration was done as a response to encounters at the San Diego Comic-Con (SDCC). Specifically wanting to see more 'mechs' in my book.

From there, this came about.



**Client:** Ben Lee

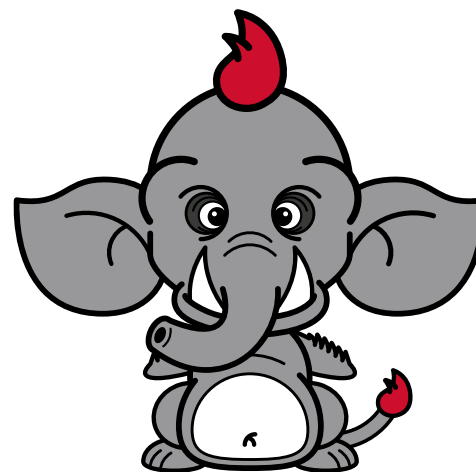
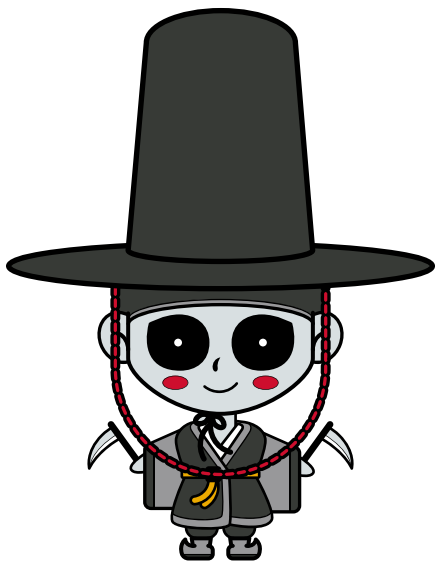
**Project:** Holiday Card

**Responsibilities:** illustration

**Background:**

Every year I work to create a holiday card to send to family, friends and clients, this was the key art for the card in 2022. As with every year, just want to create something geeky and fun to bring a smile to it's recipients.



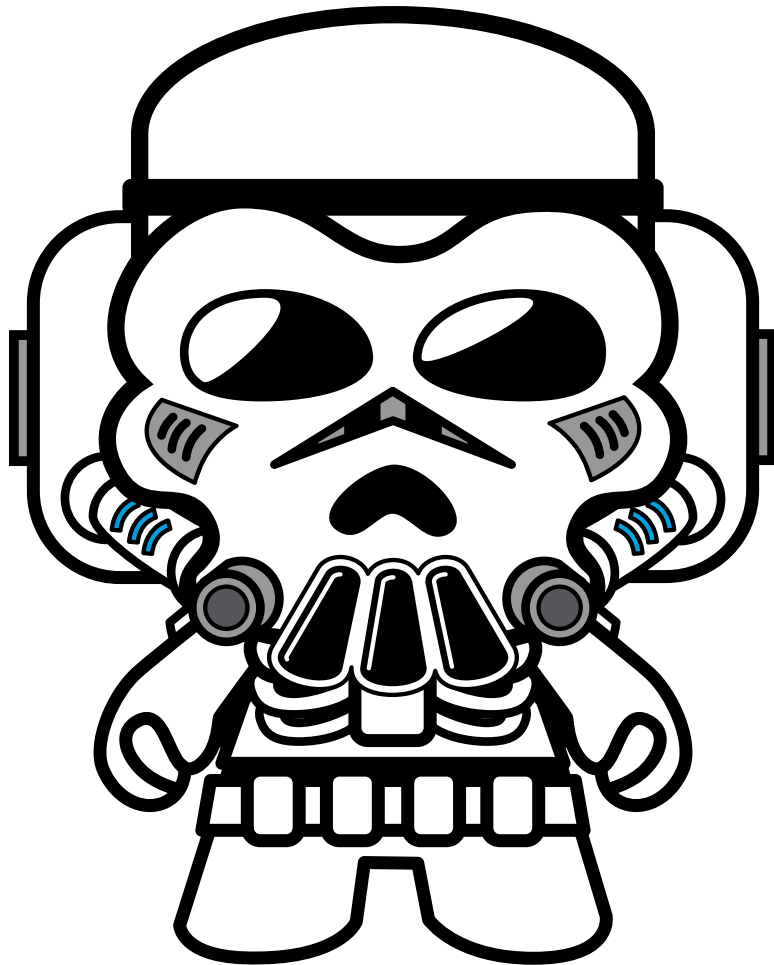


**Client:** Ben Lee

**Project:** 'Korean Folklore' Soft Enamel Pin Series

**Responsibilities:** digital illustration

**Background:**



**Client:** Ben Lee

**Project:** 'Skulltrooper' Soft Enamel Pin

**Responsibilities:** digital illustration

**Background:**

Skulltrooper™ was born out of an idea to mod a blank vinyl art toy, but struggled as to what/how to mod the blank figure. Then realized, popular among artists in the space at the time were skeletons and Stormtroopers. So the idea to do a mash-up seemed natural.

Somewhere along the way I found myself taking my turnaround art, and manufacturing an enamel pin around the concept.



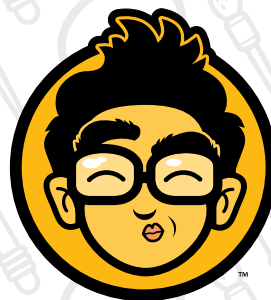
**Client:** Boulevard Brewing Company

**Project:** 'Sweet Nordic' Design Assessment

**Responsibilities:** illustration, graphic design, product design

**Background:** Boulevard Brewing Company collaborated with Bell's Brewery on a Norwegian beer. Creative was built around Boulevard's styling on product and themes around an idea of Norway aesthetic.





BEN LEE

**artist + designer + creative**



816.674.6024



[benlee@yellowrant.com](mailto:benlee@yellowrant.com)



[www.yellowrant.com](http://www.yellowrant.com)



[/yellowrant](https://www.facebook.com/yellowrant)



[@blee412](https://twitter.com/blee412)



[@yellowrant](https://www.instagram.com/yellowrant)



[/blee412](https://www.linkedin.com/company/blee412)